

**CHRISTINE  
KRÖNCKE**  
INTERIOR  
DESIGN

# CABANA

CABANA CK2869  
PREISGRUPPE 15

CABANA - gewebter Jacquard-Bezugsstoff mit markanter Struktur und weicher Haptik. Erhältlich in 17 harmonischen Farben, perfekt für ein modernes, stilvolles Interieur.

CABANA - woven jacquard upholstery fabric with a distinctive structure and soft feel. Available in 17 harmonious colours - perfect for a modern, stylish interior design.

**CABANA CK2869  
GRUPPE 15**



**094 VIRGINO**  
CABANA CK2869



**073 BEIGE**  
CABANA CK2869



**072 BAST**  
CABANA CK2869



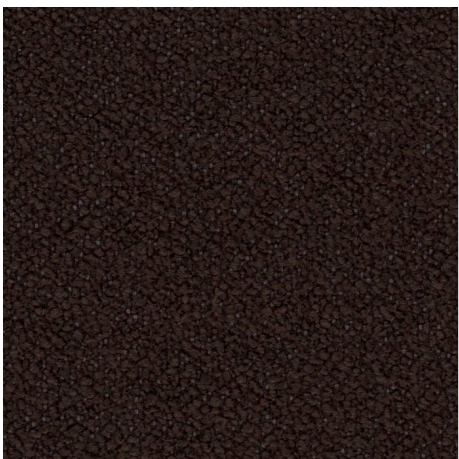
**020 BRAUNGRAU**  
CABANA CK2869



**023 BRONZE**  
CABANA CK2869



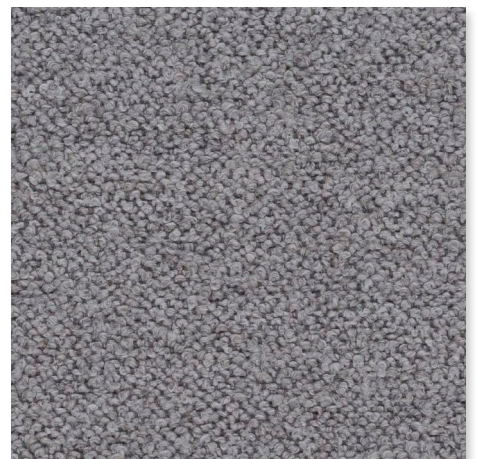
**024 LEHM**  
CABANA CK2869



**025 DUNKELBRAUN**  
CABANA CK2869



**093 ROCCIA**  
CABANA CK2869

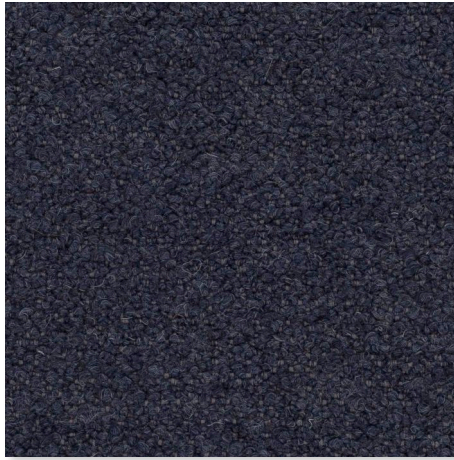


**091 ARGENTO**  
CABANA CK2869

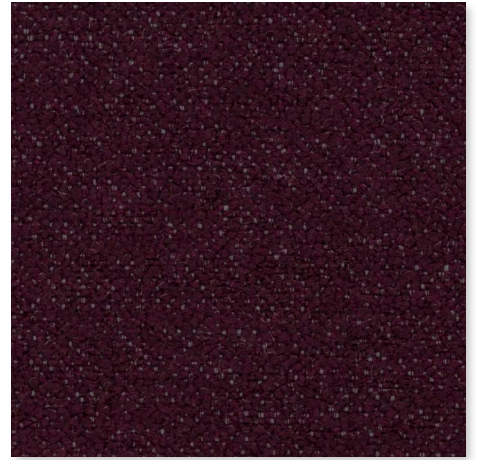
**CABANA CK2869  
GRUPPE 15**



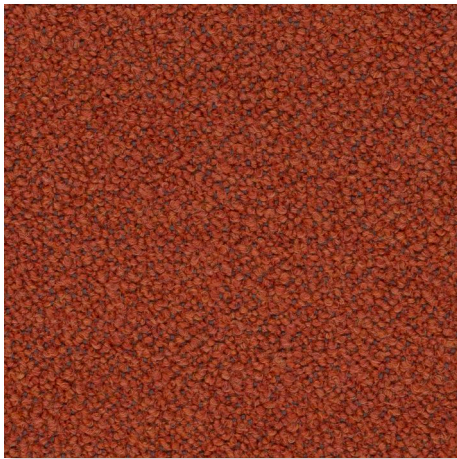
**092 PLATIN**  
CABANA CK2869



**051 DUNKELBLAU**  
CABANA CK2869



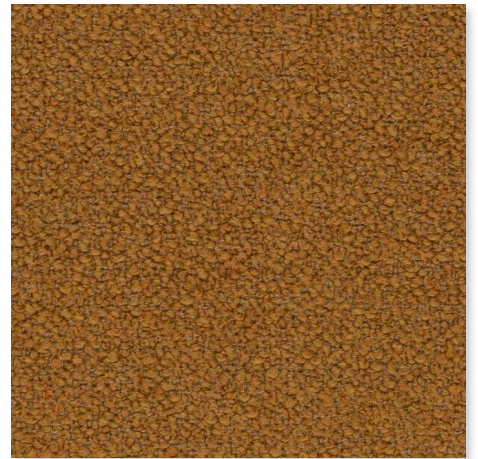
**081 BORDEAUX**  
CABANA CK2869



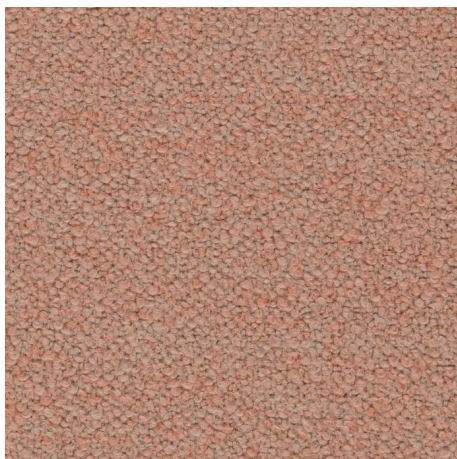
**011 POMELO**  
CABANA CK2869



**063 ORANGE**  
CABANA CK2869



**041 KURKUMA**  
CABANA CK2869



**061 ROSÉ**  
CABANA CK2869



**036 MOOS**  
CABANA CK2869

## CABANA CK2869 GRUPPE 15



**LINK - CHRISTINE KRÖNCKE PFLEGEANLEITUNG**  
/ CARE INSTRUCTIONS

### CABANA CK2869

Zusammensetzung  
15% Baumwolle, 29% Polyester, 26% Wolle, 30% Acryl

Breite: 140 cm

Rapport: 0 cm

Martindale: 50000

Pflegehinweise:



### CABANA CK2869

Composition:  
15% Cotton, 29% Polyester, 26% Wool, 30% Acrylic

Width: 140 cm

Pattern repeat: 0 cm

Martindale: 50000

Care instructions:



**CHRISTINE  
KRÖNCKE**  
INTERIOR  
DESIGN

Die Materialien und Farben auf dieser Karte sind Reproduktionen und nicht farbverbindlich. Die Darstellung kann je nach Monitor variieren. The materials and colours are reproductions and intended as a guideline only. Their representation may vary depending on the monitor.  
www.christinekroencke.net © 2025